

Approximate duration: 5'

in loving memory of Ayyub Malik, architect, ceramicist, and thinker

Elegy for Strings

Anne Ku

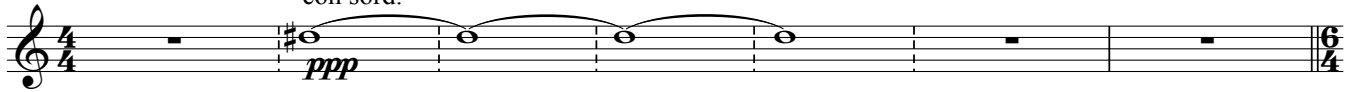
Utrecht, 18 January 2008

Introduction ♩ = 80

Cello solo

15^{ma}
con sord.

molto rall..



8 **A** Largo ♩ = 66

Not regular or strict timing but rubato, espressivo, legato



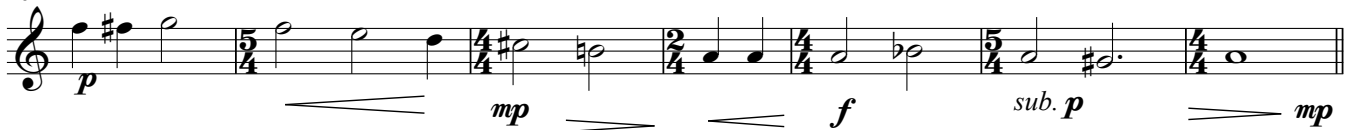
13



19 Rit. **B** Tempo primo ♩ = 66



26



33 **C**



41 **D**



V.S.

49 **E**

sub. p *mf* *p* *f*

56

p sub. *sub. p*

63 **F**

cresc. *f*

71 **G** poco accel. Poco Piu Mosso ♩ = 72

mf *f* *ff* *f* *cresc. sempre*

79 **rall.**

ff *ff* *n*