

# Elegy for Ensemble

Anne Ku  
Utrecht, 18, 24 January 2008

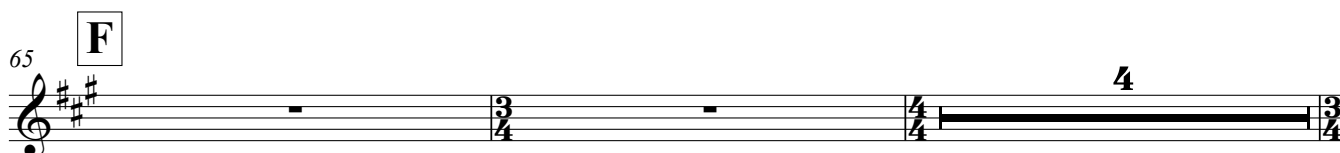
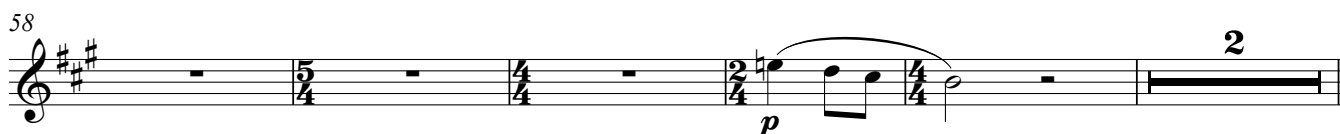
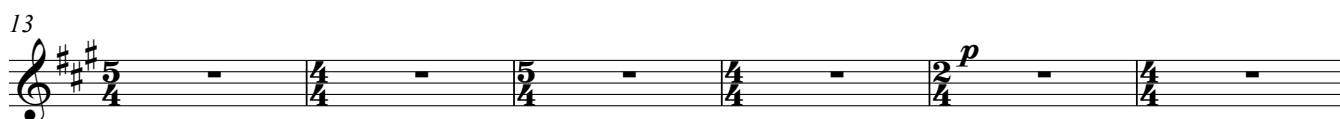
## Introduction ♩ = 80

This section only: con sordino, senza vibrato, pianississimo, poco crescendo to piano

**molto rall.**



### A Largo ♩ = 66



Baritone Saxophone

71 **poco accel.** . . . . **G** **Poco Piu Mosso** ♩ = 72

*mp* *mf* *f* *mf* *cresc. sempre*

79 **rall.** . . . .

*f* *mf* *n*